

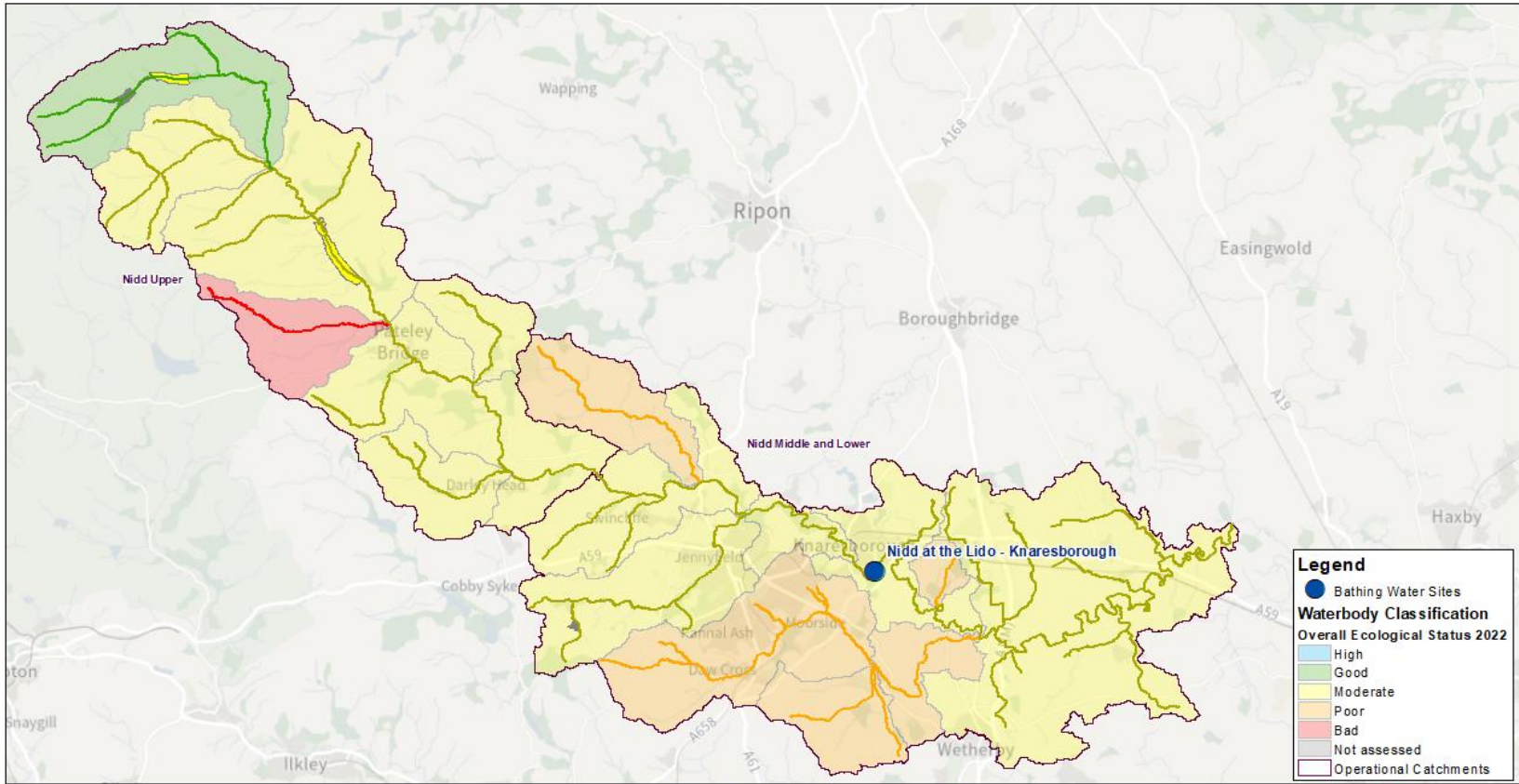
# Environment Agency Update River Nidd

- What we know
- What we have been doing
- What's next

Duncan Fyfe – Catchment Coordinator,  
Environment Agency



# Water Framework Directive 2022



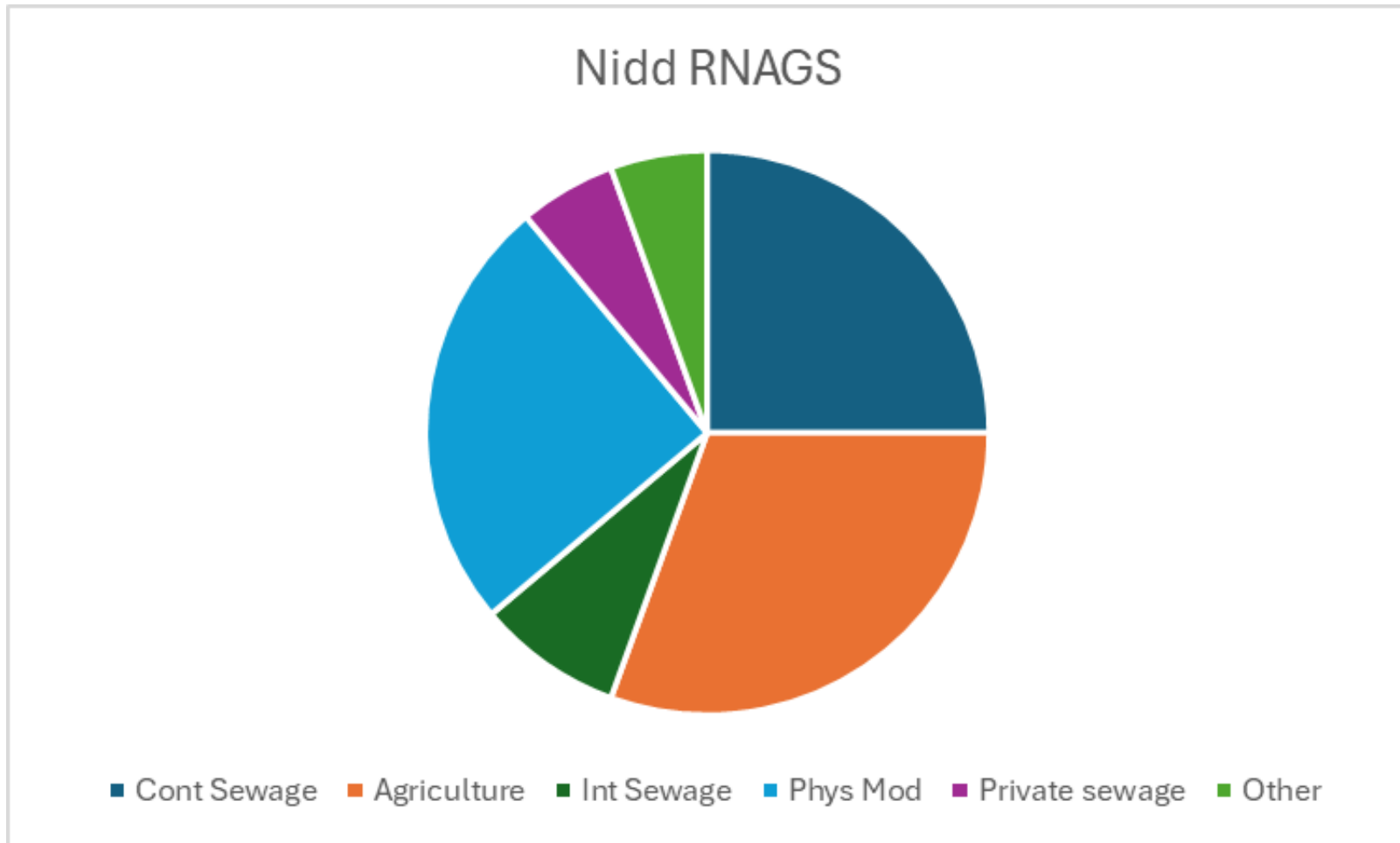
**Bathing Water - Nidd at the Lido Knaresborough**  
**Overall Ecological Status Classification 2022 of Proximate Waterbodies**

Map Produced: 28/11/2024 Scale: 1:195,000  
© Environment Agency copyright and/or database rights 2024. © Crown Copyright and Database Rights 2024. OS AC0000807064.

Environment Agency  
Integrated Environmental Planning - Strategy & Planning - Yorkshire



# Water Framework Directive 2022



**2025 classifications due later in 2026**

# Bathing Water Investigations 2025

- 5 continuous water quality monitors (sondes) between Hampsthwaite and the Lido bathing water.
- Bacti sampling at Pateley Bridge, Summerbridge, Hampsthwaite, Scotton and the Lido
- Intensive bacti sampling at Hampsthwaite and the Lido
- MST analysis of Nidd bacteriological samples



# Nidd at the Lido, Knaresborough, Bathing Water Quality

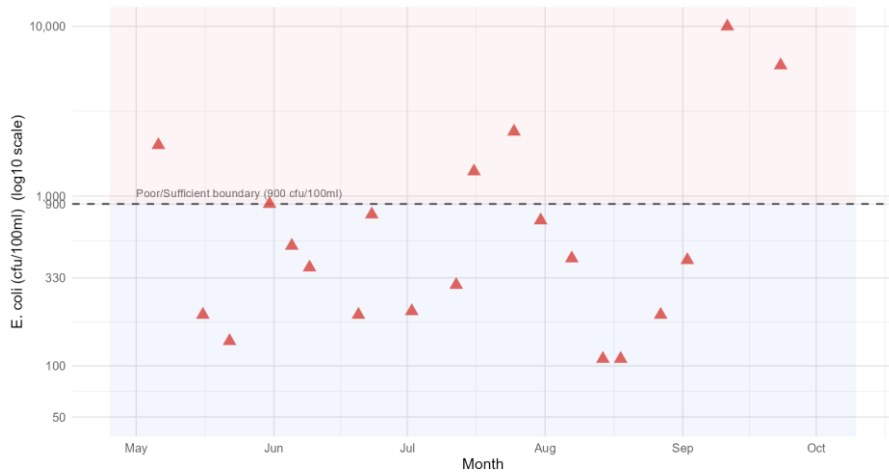
- Classified as **POOR** in 2025 and 2024



- However marked improvement in water quality in 2025
  - May be down to dry, hot and sunny summer.....

2025 Compliance samples (MS): E. coli (cfu/100ml) — Knaresborough Lido

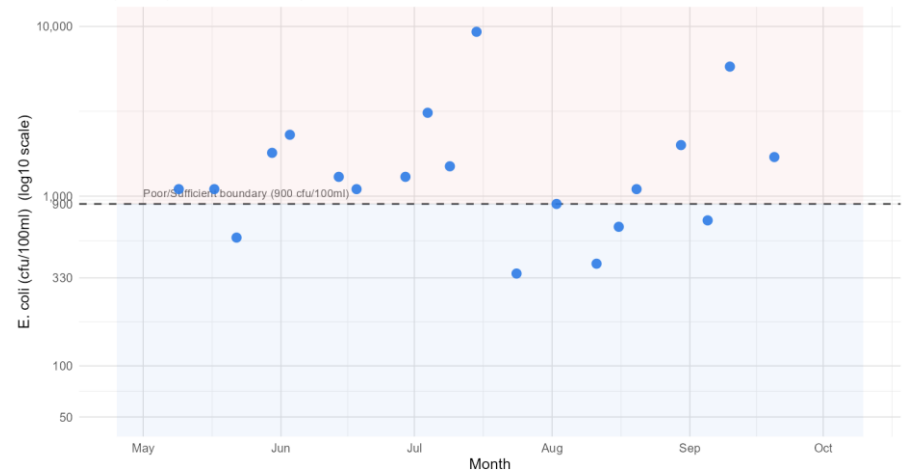
2025 | n = 20 | above threshold = 6 | below threshold = 14



Dashed line = Poor/Sufficient boundary (inland Bathing Water Regulations) | Blue shading = below threshold | Red shading = above threshold

2024 Compliance samples (MS): E. coli (cfu/100ml) — Knaresborough Lido

2024 | n = 20 | above threshold = 15 | below threshold = 5

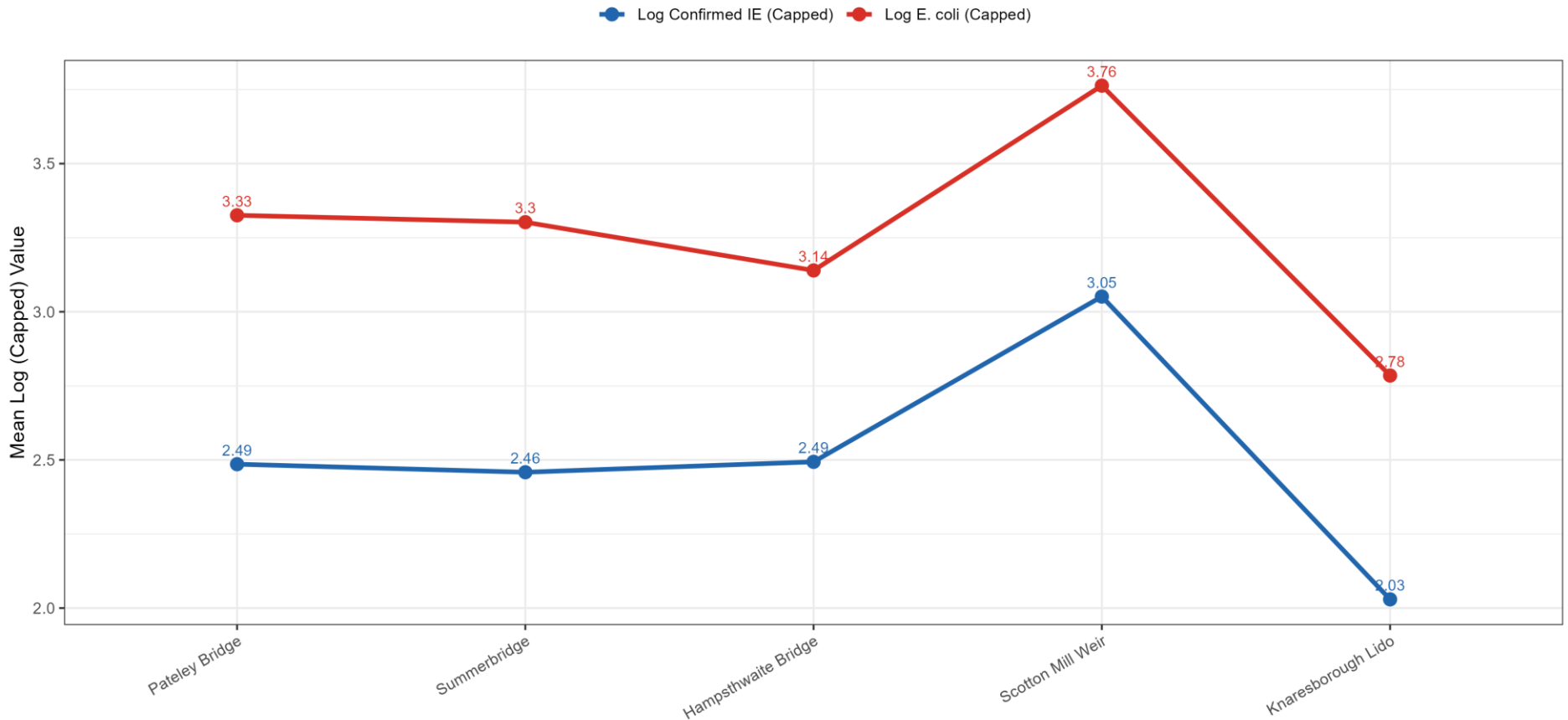


Dashed line = Poor/Sufficient boundary (inland Bathing Water Regulations) | Blue shading = below threshold | Red shading = above threshold

# Investigation findings – so far.....

- Still reviewing the data....
- Initial findings:
  - Evidence that Lido site has better bacteriological water quality than upstream sites.
  - Some evidence of rainfall impact at the Lido site.
  - MST – Human markers consistently present, Ruminant on occasion

EA River Profile — Mean Bacti Levels, 2025 (Upstream to Downstream)



# What has the EA Been Doing for the Nidd?

- Providing advice for Ashfolds Mine restoration.
- Funding options appraisal for Hunsingore fish pass.
- Active member of Peat Partnership.
- Advisory Group member of for North Yorkshire's Local Nature Recovery Strategy – ensuring adequate protection for aquatic ecology and wildlife.
- Active member of Great Yorkshire Rivers.
- Active member of the CSF group.
- Funded Hello Lamp Post
- Helped secure £1m for AQUA
- Host funding for the Catchment Partnership

# What next? – Our Plan of Action for 2026

- Complete the review the RNAGS and Measures.
- Finish review of 2025 bathing water data.
- Re-run the sampling along the catchment.
- Regulatory visits to Yorkshire Water assets including sewage treatment works and pumping stations across Nidd
- Looking for resource to target private sewage
- Ag officers inspecting farm holdings.
- Supporting citizen science / AQUA / HLP
- WEIF funding for developing iNidd project.



# How You Can Help

- New Hello Lamp Post – join in the conversation.
- Have your say. RBMP consultation on Significant Water Issue is open and closes on 20<sup>th</sup> May.
- Become citizen scientists.

• **Report pollution.** 0800 80 70 60

